

Drawing



Tools for Chefs

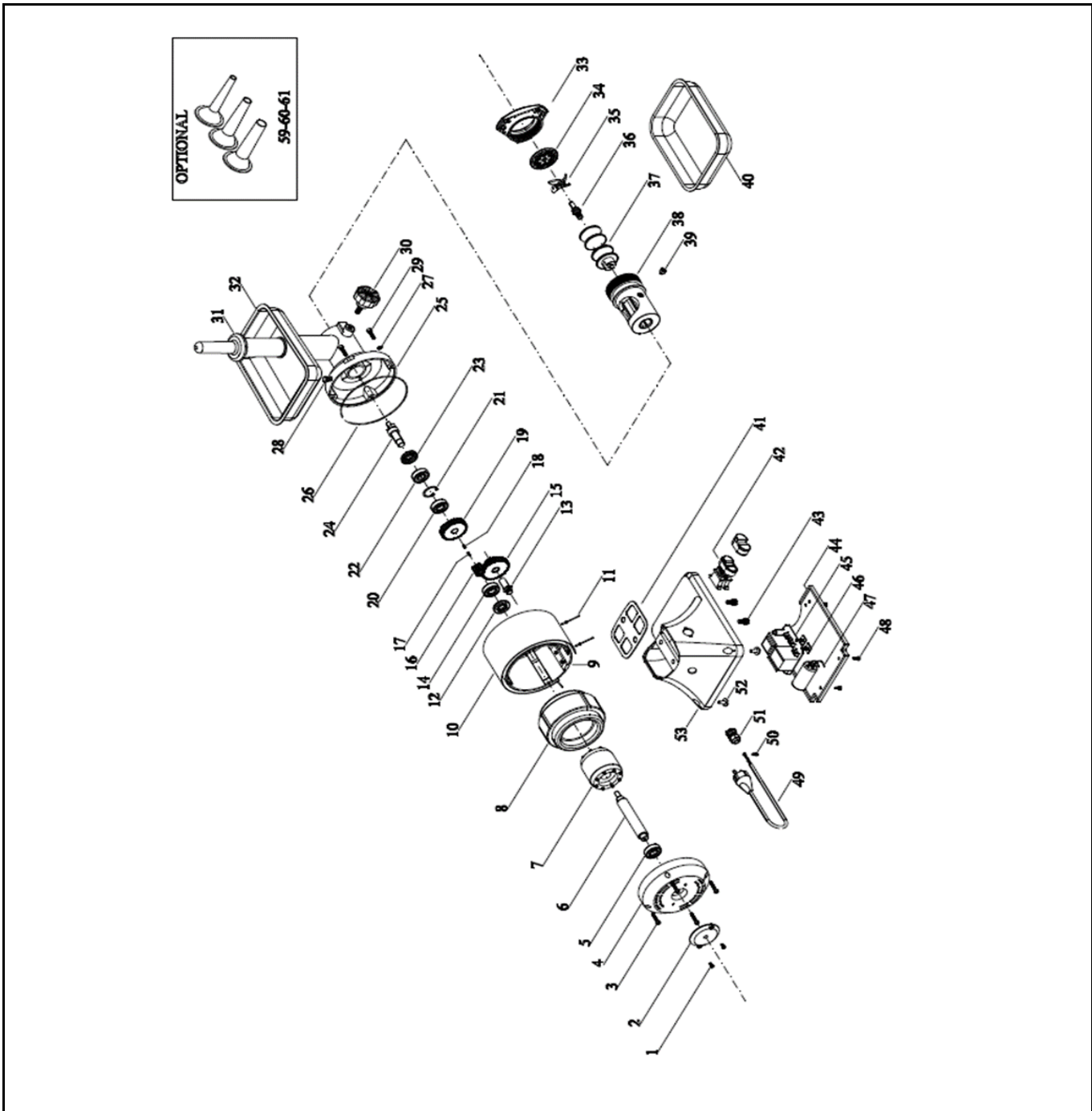
Hendi B.V.
 Steenoven 21
 3911 TX Rhenen
 The Netherlands

Batch #
 001146 and up


Appliance part#
 282199

Description
 Meat mincer Kitchen Line 12

Date	06-01-2021	Revision #	1.0
Revision	First Bill of Materials (BOM)		



Bill of materials (BOM)

 <p>Hendi B.V. Steenoven 21 3911 TX Rhenen The Netherlands</p> <p><small>Tools for Chefs</small></p>	Batch #	Appliance part#
	001146 and up	282199
	Description	
	Meat mincer Kitchen Line 12	

Date	06-01-2021	Revision #	1.0
Revision	First Bill of Materials (BOM)		


Item	Description	Part#	Quantity	Remark	Picture
1	Socket screw M4x8	n/a	2		
2	Cover bearing	n/a	1		
3	Socket screw M4x30	n/a	4		
4	End cap	n/a	1		
5	Bearing (6203 RS)	940686	1		
6	Shaft	nss	1	Available as 940495	
7	Rotor	940495	1	Incl item 6	
8	Stator	n/a	1		
9	Strip	n/a	1		
10	Housing	n/a	1		
11	Rivet	n/a	4		
12	Oil seal (25x40x7)	939970	1		
13	Axle	940501	1		
14	Bearing (6203 RS)	940686	1		
15	Gear (large double)	940518	1		
16	Gear (small)	940525	1		
17	Key 3x3x15mm	940532	1		
18	Key 4x4x12mm	940549	1		
19	Gear (large)	940556	1		
20	Bearing (6203 RS)	940686	1		
21	Circlip	940563	1		
22	Bearing (6203 RS)	940686	1		
23	Oil seal (25x40x7)	939970	1		
24	Drive shaft	940570	1		
25	Hopper	940587	1		
26	O-ring Ø164,5x2	940594	1		
27	Washer M6	n/a	4		
28	Grommet	n/a	1		
29	Socket screw M6x25	n/a	4		
30	Knob	940600	1		
31	Stick	929216	1		
32	Feeder tray	933145	1		
33	Front ring nut aluminium	930823	1		
34a	Perforated plate Ø6mm	282236	1	*Standard	
34b	Perforated plate Ø8mm	282229	1	* Optional	
34c	Perforated plate Ø4,5mm	282243	1	* Optional	
34d	Perforated plate Ø3mm	282250	1	* Optional	
35e	Perforated plate Ø2mm	282267	1	* Optional	
35	Knife	282359	1		
36	Driveshaft / knife holder	940617	1		
37	Worm screw aluminum	282304	1	*Standard	
37a	Worm screw stainless steel	940662	1	*Optional	
38	Replacement cylinder	930816	1		
39	Locking seat	n/a	1		
40	Meat tray	508107	1		
41	Housing seal	n/a	1		
42	Switch	940624	1		
43	Screw	n/a	2		
44	Bottom cover	n/a	1		
45	PCB	940631	1		
46	PCB mount	n/a	2		
47	Capacitor	940648	1		
48	Screw	n/a	2		
49	Power cord	n/a	1		
50	Retention screw	n/a	1		
51	Pull relief	n/a	1		
52	Foot	940655	4		

53	Lower housing	n/a	1		
59	Sausage stuffing tube 15mm	940679	1	* Optional (incl item 60 and 61)	
60	Sausage stuffing tube 20mm	nss	1	* Optional	
61	Sausage stuffing tube 25mm	nss	1	* Optional	

n/a -> not available

nss -> not sold separately

Circuit diagram

 <b style="font-size: 24px; margin-left: 10px;">HENDI Tools for Chefs Hendi B.V. Steenoven 21 3911 TX Rhenen The Netherlands	Batch #	Appliance part#
	001146 and up	282199
	Description	
	Meat mincer Kitchen Line 12	

Date	06-01-2021	Revision #	1.0
Revision	First Bill of Materials (BOM)		

